

July 1999 : employees industry -0,7%, hours worked -2,5%

In July 1999, compared to July of the previous year, the **number of employees** in industry excluding construction in Belgium fell by -0,7%; in construction it rose by 6,2%. At the regional level, industry in Flanders shows a decline by -1,2%; in Wallonia the number of employees expanded by 0,9%. The **number of hours worked** in industry in July 1999, when compared with the same month of the previous year, shows a strong decline of -2,5% for Belgium as a whole, while the figures for Flanders and Wallonia respectively are -3,7% and 0,3%. In construction the number of hours worked fell by -6,8%.

After the gradual decline of the number of employees in industry, which started in November 1998, figures are going up again from May 1999 on, in Flanders as well as in Wallonia. The food industry, also on the rise, does not seem to suffer from the dioxin crisis.

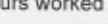
Employees Gross indices (1995=100)


	Jan	Feb	March	April	May	June	July	Aug	Sept	Oct	Nov	Dec	Year
Total industry, excluding construction													
1998	98,8	99,0	99,1	99,1	99,1	99,3	99,4	99,7	99,8	99,9	99,7	98,8	99,3
1999	98,6	98,3	98,4	98,3	98,6	98,7	98,7						
Construction													
1998	102,1	101,6	101,7	101,5	101,5	101,8	101,1	102,4	102,5	102,5	102,3	101,6	101,9
1999	101,1	100,5	101,7	102,5	104,0	105,9	107,4						

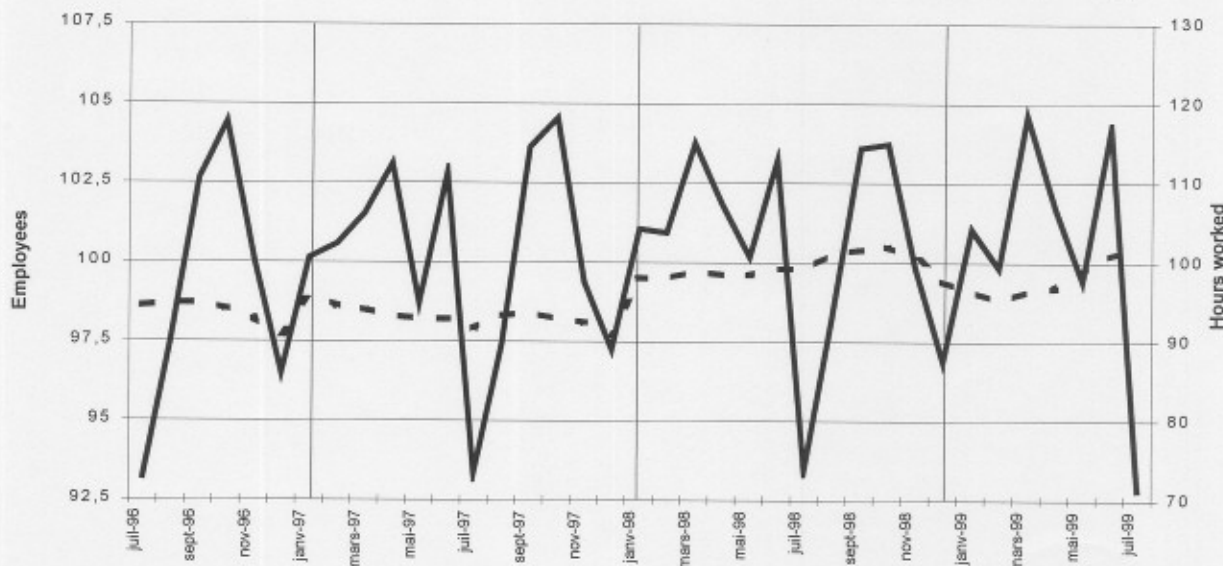
Hours worked Gross indices (1995=100)

	Jan	Feb	March	April	May	June	July	Aug	Sept	Oct	Nov	Dec	Year
Total industry, excluding construction													
1998	104,8	101,6	111,8	105,3	96,5	107,6	75,9	87,5	109,3	110,5	98,1	88,9	99,8
1999	103,8	100,1	115,7	104,2	93,9	110,9	74,0						
Construction													
1998	101,3	111,5	127,0	114,6	117,3	133,6	64,4	115,6	134,3	132,3	103,3	81,2	111,4
1999	105,2	95,1	129,1	117,1	112,0	141,2	60,0						

Totale industry Gross indices (1995=100)

Hours worked : 

Employees : 



Last three months compared to the previous three months Gross indices (1995=100)

↗ ↘ > 2.5%
↗ ↘ 0.5% to 2.5%
→ -0.5% to 0.5%
↘ ↘ -2.5% to -0.5%
↘ ↘ < -2.5%

BE : Belgium
VL : Flanders
WA : Wallonia
BR : Brussels

Industrial branches / Main industrial groupings

	Employees			
	BE	VL	WA	BR
Total industry	↘	↘	↘	→
Total industry, excluding construction	↘	↘	↘	↘
Intermediate goods	→	↘	→	→
Capital goods	↘	↘	↘	↘
Durable consumer goods	↘	↘	↘	↘
Non-durable consumer goods	↘	↘	↘	→
Mining and quarrying	↘	→	↘	↘
Food products, beverages and tobacco	↘	↘	↘	↘
Textiles and textiles products	↘	↘	→	↘
Pulp, paper and paper products; publishing and printing	↘	↘	↘	↘
Chemicals and chemical, rubber and plastic products	→	→	↘	→
Metal products, machinery and equipment	→	→	→	↘
Coke, refined petroleum products and nuclear fuel	↘	↘	→	
Non-metallic mineral products	↘	↘	↘	→
Manufacture of basic metals	→	↘	→	→
Furniture	↘	↘	↘	↘
Electricity	→	→	→	→
Construction	→	→	→	→

Augustus 1999 : employees industry -0,8%, hours worked +3,4%

In Augustus 1999, compared to Augustus of the previous year, the **number of employees** in industry excluding construction in Belgium fell by -0,8%; in construction it rose by 5,4%. At the regional level, industry in Flanders shows a decline by -1,2%; in Wallonia the number of employees expanded by 0,2%. The **number of hours worked** in industry in Augustus 1999, when compared with the same month of the previous year, shows a strong increase of 3,4% for Belgium as a whole, while the figures for Flanders and Wallonia respectively are 3,0% and 3,1%. In construction the number of hours worked increased by 5,7%.

After the gradual decline of the number of employees in industry, which started in November 1998, figures are going up again from May 1999 on, in Flanders as well as in Wallonia. The food industry, also on the rise, does not seem to suffer from the dioxin crisis.

Employees
Gross indices
(1995=100)

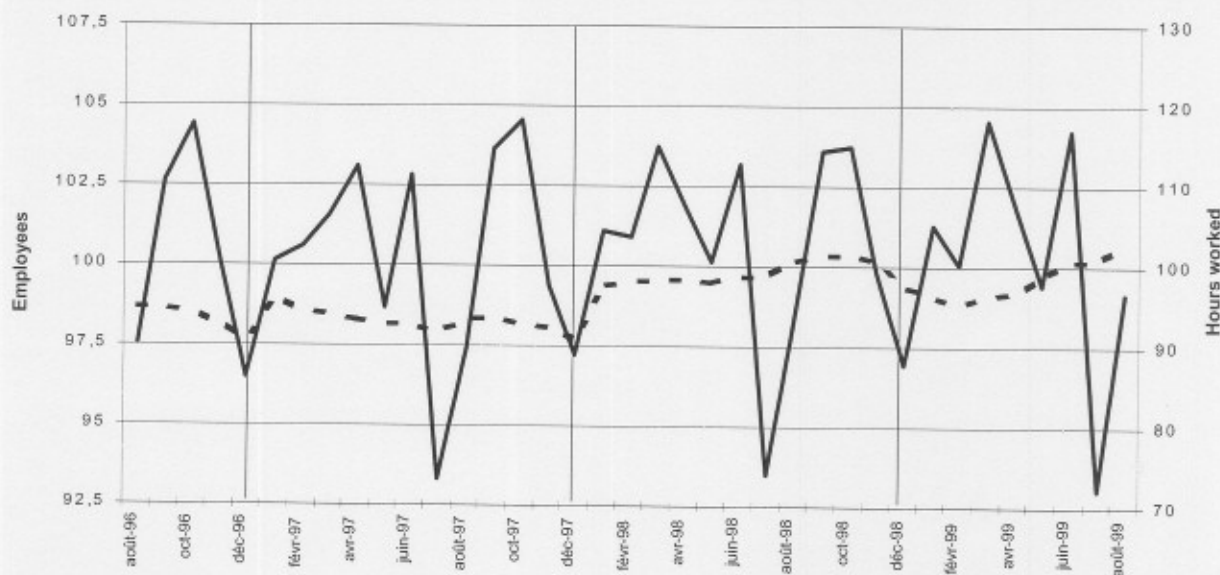
	Jan	Feb	March	April	May	June	July	Aug	Sept	Oct	Nov	Dec	Year
Totale industry, excluding construction													
1998	98,8	98,9	99,0	99,0	99,0	99,2	99,3	99,6	99,7	99,9	99,6	98,8	99,2
1999	98,6	98,4	98,4	98,3	98,5	98,7	98,6	98,8					
Construction													
1998	102,1	101,6	101,7	101,5	101,5	101,8	101,1	102,4	102,5	102,5	102,3	101,6	101,9
1999	101,1	100,5	101,7	102,5	104,1	105,9	106,3	107,9					
Totale industry, excluding construction													
1998	104,9	101,7	111,9	105,3	96,4	107,6	76,2	87,4	109,4	110,6	98,2	89,3	99,9
1999	105,0	101,3	115,3	104,8	94,2	111,0	74,8	90,4					
Construction													
1998	101,3	111,5	127,0	114,6	117,3	133,6	64,4	115,6	134,3	132,3	103,3	81,2	111,4
1999	105,2	95,1	129,1	117,1	111,7	141,2	60,1	122,2					

Hours worked
Gross indices
(1995=100)

Totale industry
Gross indices
(1995=100)

Hours worked :

Employees :



Last three months compared to the previous three months
Gross indices
(1995=100)

↗↗ > 2.5%
↗ 0.5% to 2.5%
→ -0.5% to 0.5%
↘ -2.5% to -0.5%
↘↘ < -2.5%

BE : Belgium
VL : Flanders
WA : Wallonia
BR : Brussels

Industrial branches / Main industrial groupings	Employees			
	BE	VL	WA	BR
Total industry	↘	↗	↗	↗
Total industry, excluding construction	↘	↗	↗↗	→
Intermediate goods	↘	→	↘	↘
Capital goods	↗	↗↗	↗	↗↗
Durable consumer goods	→	→	↘↘	↗
Non-durable consumer goods	↗	↗	↗	→
Mining and quarrying	→	→	→	
Food products, beverages and tobacco	↗	↗	↗↗	→
Textiles and textiles products	↘	↘	↘	↘
Pulp, paper and paper products; publishing and printing	↗	↗	↗	↗↗
Chemicals and chemical, rubber and plastic products	↗	↗	↗	→
Metal products, machinery and equipment	→	→	→	→
Coke, refined petroleum products and nuclear fuel	↘	↘	→	
Non-metallic mineral products	→	↗	→	→
Manufacture of basic metals	↘	→	↘	↘
Furniture	→	→	↘	↗
Electricity	→	→	→	→
Construction	→	→	→	→



Statistics Belgium
Short Term Indicators
phone (32)(2)5486571
fax (32)(2)5486572
web:statbel.fgov.be

Belgium - September 1999 : employees industry -0,1%, hours worked +0,6%

In September 1999, compared to September of the previous year, the **number of employees** in industry excluding construction in Belgium fell by -0,1%; in construction it rose by 2,6%. At the regional level, industry in Flanders shows a decline by -1,0%; in Wallonia the number of employees expanded by 0,8%. The **number of hours worked** in industry in September 1999, when compared with the same month of the previous year, shows an increase of 0,6% for Belgium as a whole, while the figures for Flanders and Wallonia respectively are -0,5% and 1,2%. In construction the number of hours worked increased by 4,0%.

The evolution of the number of employees very clearly shows a gradual downturn of economy from November 1998 on and a recovery which began in May 1999. In September the level preceding the downswing was reached once again. The recovery is similar in Flanders and Wallonia, and in most sectors. In the last six months the food industry shows the strongest increase in number of employees, despite the dioxin crisis, while textiles and clothes is the only sector still in decline.

Employees
Gross indices
(1995=100)

	Jan	Feb	March	April	May	June	July	Aug	Sept	Oct	Nov	Dec	Year
Totale industry, excluding construction													
1998	98,8	98,9	99,0	99,0	99,0	99,2	99,3	99,6	99,7	99,9	99,6	98,8	99,2
1999	98,6	98,4	98,4	98,3	98,5	98,7	98,6	98,9	99,6				
Construction													
1998	102,1	101,6	101,7	101,5	101,5	101,8	101,1	102,4	102,5	102,5	102,3	101,6	101,9
1999	101,1	100,5	101,7	102,5	102,3	104,2	104,3	105,9	105,2				

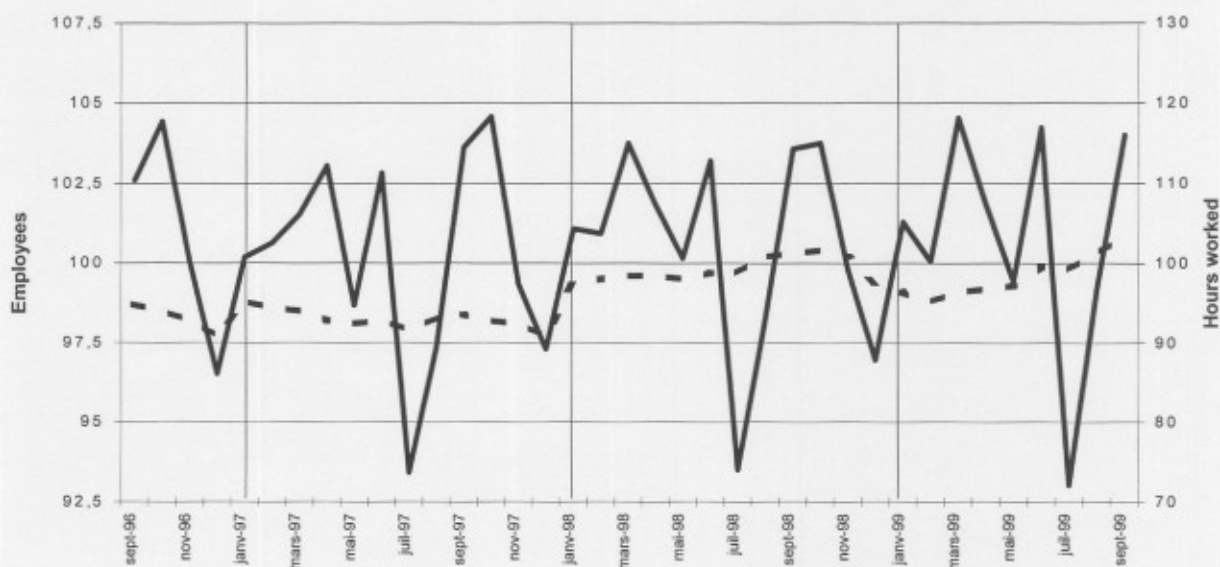
Hours worked
Gross indices
(1995=100)

	Jan	Feb	March	April	May	June	July	Aug	Sept	Oct	Nov	Dec	Year
Totale industry, excluding construction													
1998	104,9	101,7	111,9	105,3	96,4	107,6	76,2	87,4	109,4	110,6	98,2	89,3	99,9
1999	105,0	101,3	115,3	104,8	94,2	111,0	74,8	90,1	110,1				
Construction													
1998	101,3	111,5	127,0	114,6	117,3	133,6	64,4	115,6	134,3	132,3	103,3	81,2	111,4
1999	105,2	95,1	129,1	117,1	111,7	141,2	60,4	123,1	139,7				

Totale industry
Gross indices
(1995=100)

Hours worked :

Employees :



Last three months compared to the previous three months
Gross indices
(1995=100)

↗↗ > 2.5%
↗ 0.5% to 2.5%
→ -0.5% to 0.5%
↘ -2.5% to -0.5%
↘↘ < -2.5%

BE : Belgium
VL : Flanders
WA : Wallonia
BR : Brussels

Industrial branches / Main industrial groupings

	Employees			
	BE	VL	WA	BR
Total industry	↗	↗	↗	↗
Total industry, excluding construction	↗	↗	↗↗	↗
Intermediate goods	→	→	↘	→
Capital goods	↗↗	↗	→	↗↗
Durable consumer goods	→	→	↘	↗
Non-durable consumer goods	↗	↗	↗	→
Mining and quarrying	↗	↗	→	
Food products, beverages and tobacco	↗	↗	↗↗	↗
Textiles and textiles products	↘	↘	↘	↘
Pulp, paper and paper products; publishing and printing	↗	↗	→	↗
Chemicals and chemical, rubber and plastic products	↗	↗	↗	↗
Metal products, machinery and equipment	→	→	↗	→
Coke, refined petroleum products and nuclear fuel	↗	↗	→	
Non-metallic mineral products	→	→	→	→
Manufacture of basic metals	→	→	↘	→
Furniture	↗	↗	↘↘	↗↗
Electricity	→	→	→	→
Construction	→	→	→	→



Ministry of Economic Affairs



Statistics Belgium
Short Term Indicators
phone (32)(2)5486571
fax (32)(2)5486831
web:statbel.fgov.be

Belgium - October 1999 : employees industry -0.5%, hours worked -2.3%

In October 1999, compared to October of the previous year, the **number of employees** in industry excluding construction in Belgium fell by -0,5%; in construction it rose by 2,5%. At the regional level, industry in Flanders shows a decline by -0,9%; in Wallonia the number of employees expanded by 1,0%. The **number of hours worked** in industry in October 1999, when compared with the same month of the previous year, shows a decline of -2,3% for Belgium as a whole, while the figures for Flanders and Wallonia respectively are -2,1% and -1,8%. In construction the number of hours worked increased by 1,7%.

The evolution of the number of employees very clearly shows a gradual downturn of the business cycle from November 1998 on and a recovery which began in May 1999. In October the level preceding the downswing is almost reached. The recovery is similar in Flanders and Wallonia, and in most sectors. A comparison of the last three months with the preceding three-month period shows only in the textiles and clothes sector a still falling number of employees.

Employees
Gross indices
(1995=100)

	Jan	Feb	March	April	May	June	July	Aug	Sept	Oct	Nov	Dec	Year
Totale industry, excluding construction													
1998	98,8	98,9	99,0	99,0	99,0	99,2	99,3	99,6	99,7	99,9	99,6	98,8	99,2
1999	98,6	98,4	98,4	98,3	98,5	98,8	98,7	98,9	99,1	99,4			
Construction													
1998	102,1	101,6	101,7	101,5	101,5	101,8	101,1	102,4	102,5	102,5	102,3	101,6	101,9
1999	101,1	100,5	101,7	102,5	101,1	102,5	102,5	104,2	105,0	105,1			

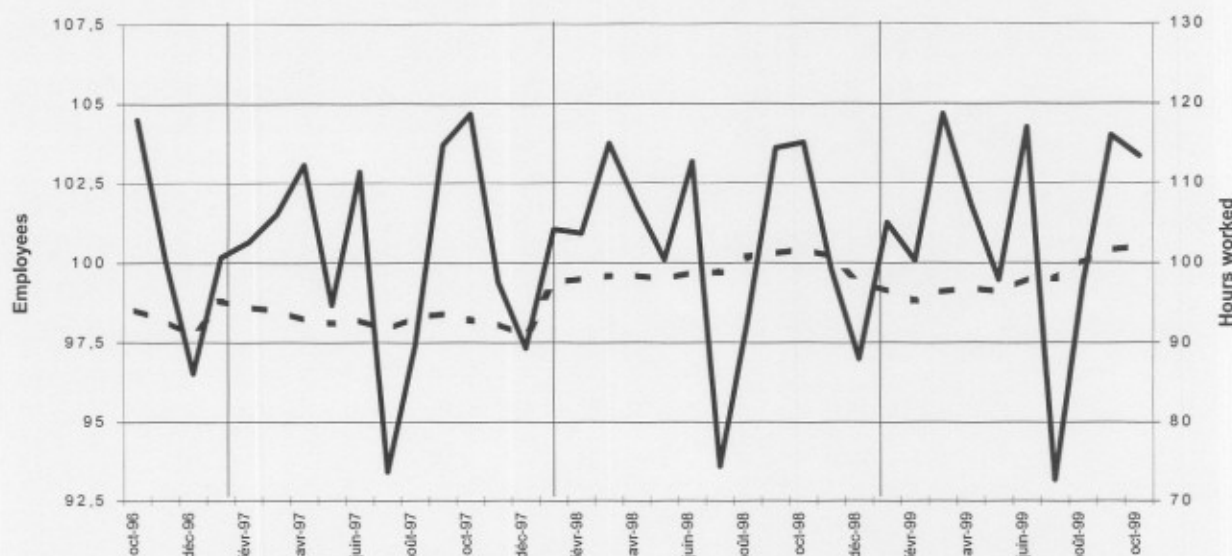
Hours worked
Gross indices
(1995=100)

	Jan	Feb	March	April	May	June	July	Aug	Sept	Oct	Nov	Dec	Year
Totale industry, excluding construction													
1998	104,7	101,6	111,9	105,2	96,2	107,5	76,5	87,4	109,4	110,7	98,1	89,4	99,9
1999	104,6	101,1	115,9	104,7	94,4	110,8	75,3	91,0	110,0	108,1			
Construction													
1998	101,2	111,5	127,2	114,7	117,3	133,7	64,5	115,4	134,5	132,6	103,1	81,2	111,4
1999	105,5	95,2	129,2	117,3	111,6	141,8	60,8	123,3	140,3	134,8			

Totale industry
Gross indices
(1995=100)

Hours worked :

Employees :



Last three months compared to the previous three months
Gross indices
(1995=100)

↗ > 2.5%
↘ 0.5% to 2.5%
→ -0.5% to 0.5%
↘ -2.5% to -0.5%
↘ < -2.5%

BE : Belgium
VL : Flanders
WA : Wallonia
BR : Brussels

Industrial branches / Main industrial groupings

	Employees			
	BE	VL	WA	BR
Total industry	↘	↘	↘	↘
Total industry, excluding construction	↘	↘	↘	↘
Intermediate goods	→	→	↘	↘
Capital goods	↘	↘	↘	↘
Durable consumer goods	↘	↘	↘	↘
Non-durable consumer goods	↘	↘	↘	↘
Mining and quarrying	↘	↘	→	
Food products, beverages and tobacco	↘	↘	↘	↘
Textiles and textiles products	↘	↘	↘	↘
Pulp, paper and paper products; publishing and printing	↘	↘	→	↘
Chemicals and chemical, rubber and plastic products	↘	↘	↘	↘
Metal products, machinery and equipment	→	→	↘	→
Coke, refined petroleum products and nuclear fuel	↘	↘	↘	
Non-metallic mineral products	→	→	→	↘
Manufacture of basic metals	→	→	↘	↘
Furniture	→	→	↘	↘
Electricity	↘	↘	↘	↘
Construction	→	→	→	→

Belgium - November 1999 : employees industry -0.4%, hours worked -1.4%

In November 1999, compared to November of the previous year, the **number of employees** in industry excluding construction in Belgium fell by -0,4%; in construction it rose by 2,8%. At the regional level, industry in Flanders shows a decline by -0,8%; in Wallonia the number of employees expanded by 1,7%. The **number of hours worked** in industry in November 1999, when compared with the same month of the previous year, shows a decline of -1,4% for Belgium as a whole, while the figures for Flanders and Wallonia respectively are -0,2% and -1,8%. In construction the number of hours worked increased by 15,6%.

The evolution of the number of employees very clearly shows a gradual downturn of the business cycle from November 1998 on and a recovery which began in May 1999. In November the level preceding the downswing is almost reached. A comparison of the period September-November 1999 with the preceding three months shows a slightly more marked recovery in Wallonia than in Flanders. The number of employees rises for all sectors, except for the textiles and clothes sector.

Employees
 Gross indices
 (1995=100)

	Jan	Feb	March	April	May	June	July	Aug	Sept	Oct	Nov	Dec	Year
Totale industry, excluding construction													
1998	98,8	98,9	99,0	99,0	99,0	99,2	99,3	99,6	99,7	99,9	99,6	98,8	99,2
1999	98,6	98,4	98,4	98,3	98,5	98,8	98,7	98,9	99,1	99,3	99,2		
Construction													
1998	102,1	101,6	101,7	101,5	101,5	101,8	101,1	102,4	102,5	102,5	102,3	101,6	101,9
1999	101,1	100,5	101,7	102,5	101,1	102,5	102,5	104,2	105,2	105,3	105,2		

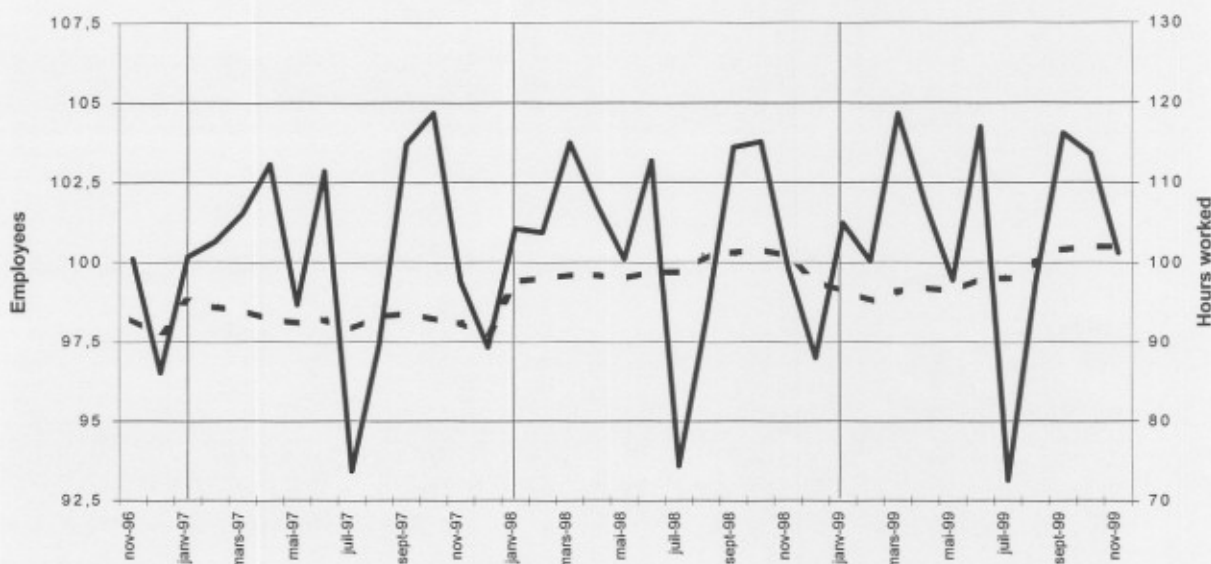
Hours worked
 Gross indices
 (1995=100)

	Jan	Feb	March	April	May	June	July	Aug	Sept	Oct	Nov	Dec	Year
Totale industry, excluding construction													
1998	104,7	101,6	111,9	105,2	96,2	107,5	76,5	87,4	109,4	110,7	98,1	89,4	99,9
1999	104,5	101,1	115,8	104,7	94,2	110,8	75,2	91,0	110,0	108,0	96,7		
Construction													
1998	101,2	111,5	127,2	114,7	117,3	133,7	64,5	115,4	134,5	132,6	103,1	81,2	111,4
1999	105,5	95,3	129,2	117,2	111,8	141,9	60,8	123,3	141,1	135,7	119,2		

Totale industry
 Gross indices
 (1995=100)

Hours worked :

Employees :



Last three months compared to the previous three months
 Gross indices
 (1995=100)

↗ > 2.5%
 ↘ 0.5% to 2.5%
 → -0.5% to 0.5%
 ↙ -2.5% to -0.5%
 ↘ < -2.5%

BE : Belgium
 VL : Flanders
 WA : Wallonia
 BR : Brussels

Industrial branches / Main industrial groupings

	Employees			
	BE	VL	WA	BR
Total industry	↘	↘	↘	→
Total industry, excluding construction	→	→	↘	→
Intermediate goods	↘	↘	↘	↘
Capital goods	↘	↘	↘	↘
Durable consumer goods	↘	↘	→	↘
Non-durable consumer goods	→	→	↘	→
Mining and quarrying	↘	↘	↘	
Food products, beverages and tobacco	↘	↘	↘	↘
Textiles and textiles products	↘	→	↘	↘
Pulp, paper and paper products; publishing and printing	↘	↘	↘	↘
Chemicals and chemical, rubber and plastic products	→	→	↘	↘
Metal products, machinery and equipment	→	→	↘	↘
Coke, refined petroleum products and nuclear fuel	↘	↘	↘	
Non-metallic mineral products	→	→	→	↘
Manufacture of basic metals	→	→	↘	↘
Furniture	→	→	↘	→
Electricity	↘	↘	↘	↘
Construction	↘	↘	↘	↘



Statistics
Belgium

Short Term Indicators
phone (32)(2)5486571
fax (32)(2)5486831
web:statbel.fgov.be

Belgium - December 1999 : employees industry + 0.2%, hours worked + 5.0%

In December 1999, compared to December of the previous year, the **number of employees** in industry excluding construction in Belgium increased by 0,2%; in construction it rose by 3,0%. At the regional level, industry in Flanders shows a status quo by -0,2%; in Wallonia the number of employees expanded by 2,0%. The **number of hours worked** in industry in December 1999, when compared with the same month of the previous year, shows a strong increase of 5,0% for Belgium as a whole, while the figures for Flanders and Wallonia respectively are 4,9% and 7,5%. In construction the number of hours worked increased by 22,2%.

The evolution of the number of employees very clearly shows a gradual downturn of the business cycle from November 1998 on and a recovery which began in May 1999; as a result the 1999 annual figure slightly falls by 0.5% (Flanders - 0,7%, Wallonia + 0,5%). The hours worked in industry, on the other hand, rose somewhat in 1999, by 0.9% (Flanders + 0,7%, Wallonia + 2,5%). In construction number of employees went up by 0.9% and hours worked by 3.1%.

Employees
Gross indices
(1995=100)

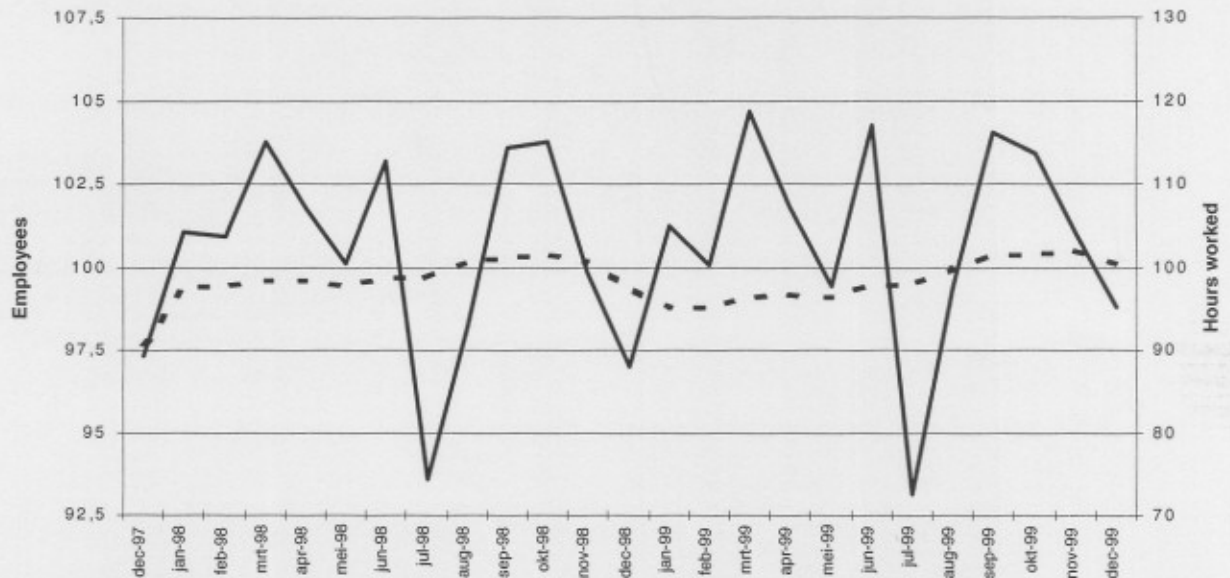
	Jan	Feb	March	April	May	June	July	Aug	Sept	Oct	Nov	Dec	Year
Totale industry, excluding construction													
1998	98,8	98,9	99,0	99,0	99,0	99,2	99,3	99,6	99,7	99,9	99,6	98,8	99,2
1999	98,6	98,4	98,4	98,3	98,5	98,8	98,7	98,9	99,1	99,3	99,2	99,0	98,8
Construction													
1998	102,1	101,6	101,7	101,5	101,5	101,8	101,1	102,4	102,5	102,5	102,3	101,6	101,9
1999	99,6	100,5	101,7	102,5	101,1	102,5	102,5	104,2	105,2	104,8	105,2	104,6	102,9
Totale industry, excluding construction													
1998	104,7	101,6	111,9	105,2	96,2	107,5	76,5	87,4	109,4	110,7	98,1	89,4	99,9
1999	104,5	101,1	115,8	104,7	94,2	110,8	75,2	91,0	110,0	108,0	100,0	93,9	100,8
Construction													
1998	101,2	111,5	127,2	114,7	117,3	133,7	64,5	115,4	134,5	132,6	103,1	81,2	111,4
1999	105,5	95,3	129,2	117,2	111,8	141,9	60,8	123,3	141,1	136,2	119,6	99,2	115,1

Hours worked
Gross indices
(1995=100)

Totale industry
Gross indices
(1995=100)

Hours worked :

Employees :



Last three months compared to the previous three months
Gross indices
(1995=100)

↗ > 2.5%
↘ 0.5% to 2.5%
→ -0.5% to 0.5%
↘ -2.5% to -0.5%
↘ < -2.5%

BE : Belgium
VL : Flanders
WA : Wallonia
BR : Brussels

Industrial branches / Main industrial groupings	Employees			
	BE	VL	WA	BR
Total industry	→	→	↗	→
Total industry, excluding construction	→	→	→	→
Intermediate goods	↘	↘	↘	↘
Capital goods	→	→	→	→
Durable consumer goods	→	→	↘	↗
Non-durable consumer goods	→	→	↘	↘
Mining and quarrying	→	↘	→	
Food products, beverages and tobacco	→	↘	↘	↘
Textiles and textiles products	→	→	↘	↘
Pulp, paper and paper products; publishing and printing	↘	↘	↘	↘
Chemicals and chemical, rubber and plastic products	→	→	↘	↘
Metal products, machinery and equipment	→	→	↘	↘
Coke, refined petroleum products and nuclear fuel	↘	↘	↘	
Non-metallic mineral products	→	→	→	
Manufacture of basic metals	→	→	↘	↘
Furniture	↘	↘	↘	↘
Electricity	↘	↘	↘	↘
Construction	↘	↘	↘	→





Statistics
Belgium

Short Term Indicators
phone (32)(2)5486571
fax (32)(2)5486831
web:statbel.fgov.be

Belgium - January 2000 : employees industry - 0,5%, hours worked - 1.4%

In January 2000, compared to January of the previous year, the **number of employees** in industry excluding construction in Belgium fell by -0,5%; in construction it rose by 3,3%. At the regional level, industry in Flanders shows a decline by -0,5%; in Wallonia the number of employees shrunk by -0,4%. The **number of hours worked** in industry in January 2000, when compared with the same month of the previous year, shows a decline of -1,4% for Belgium as a whole, while the figures for Flanders and Wallonia respectively are -1,6% and -0,8%. In construction the number of hours worked fell by -9,6%.

The evolution of the number of employees of the period November 1999 - January 2000 compared to the previous three months shows no marked global pattern and no clear trends at the level of sectors or regions. The (moderate) downturn in sectors like construction, mining and quarrying and non-metallic mineral products is probably due to winter; only the chemical sector shows a significant rise.

	Jan	Feb	March	April	May	June	July	Aug	Sept	Oct	Nov	Dec	Year
Totale industry, excluding construction													
1999	98,7	98,4	98,5	98,4	98,6	98,8	98,7	99,0	99,2	99,4	99,4	99,0	98,8
2000	98,2												
Construction													
1999	99,6	100,5	101,8	102,6	101,1	102,6	102,6	104,3	105,3	104,9	104,8	104,7	102,9
2000	102,9												
Totale industry, excluding construction													
1999	104,7	101,3	116,0	104,9	94,5	111,1	75,2	91,2	110,3	108,3	100,5	94,0	101,0
2000	103,2												
Construction													
1999	105,7	95,7	129,3	117,2	111,8	141,8	61,2	123,3	141,1	136,2	120,2	100,5	115,3
2000	95,6												

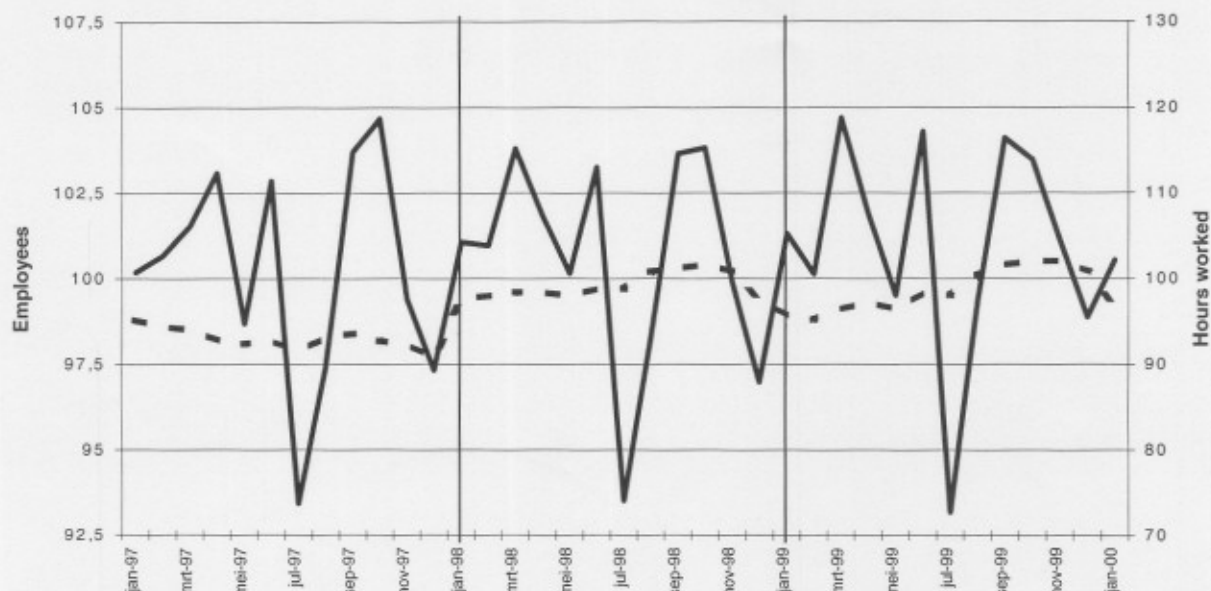
Employees
Gross indices
(1995=100)

Hours worked
Gross indices
(1995=100)

Totale industry
Gross indices
(1995=100)

Hours worked :

Employees :



Last three months
compared to the
previous three
months
Gross indices
(1995=100)

↗ > 2.5%
↘ 0.5% to 2.5%
→ -0.5% to 0.5%
↖ -2.5% to -0.5%
↙ < -2.5%

BE : Belgium
VL : Flanders
WA : Wallonia
BR : Brussels

Industrial branches / Main industrial groupings

	Employees			
	BE	VL	WA	BR
Total industry	↘	↘	↘	↘
Total industry, excluding construction	↘	↘	↘	↘
Intermediate goods	↘	↘	↘	↘
Capital goods	↘	↘	↘	↘
Durable consumer goods	↘	↘	↘	↘
Non-durable consumer goods	↘	↘	↘	↘
Mining and quarrying	↘	↘	↘	↘
Food products, beverages and tobacco	↘	↘	↘	↘
Textiles and textiles products	↘	↘	↘	↘
Pulp, paper and paper products; publishing and printing	↘	↘	↘	↘
Chemicals and chemical, rubber and plastic products	↘	↘	↘	↘
Metal products, machinery and equipment	↘	↘	↘	↘
Coke, refined petroleum products and nuclear fuel	↘	↘	↘	↘
Non-metallic mineral products	↘	↘	↘	↘
Manufacture of basic metals	↘	↘	↘	↘
Furniture	↘	↘	↘	↘
Electricity	↘	↘	↘	↘
Construction	↘	↘	↘	↘



Ministry of
Economic Affairs



Statistics
Belgium

Short Term Indicators
phone (32)(2)5486571
fax (32)(2)5486831
web:statbel.fgov.be

Belgium - February 2000 : employees industry + 0.1%, hours worked + 7.6%

In February 2000, compared to February of the previous year, the **number of employees** in industry excluding construction in Belgium increased by 0,1%; in construction it rose by 2,7%. At the regional level, industry in Flanders shows a status quo by 0,2%; in Wallonia the number of employees shrunk by -0,3%. The **number of hours worked** in industry in February 2000, when compared with the same month of the previous year, shows a strong increase of 7,6% for Belgium as a whole, while the figures for Flanders and Wallonia respectively are 8,0% and 7,0%. In construction the number of hours worked increased by 28,2%.

The pronounced increase of hours worked compared with February 1999 is due to the leap year (29 days in February 2000), but also to exceptionally high temperatures in contrast with unfavourable climatic conditions last year; not surprisingly, the largest increases occur in weatherbound activities such as construction (+ 28.2%) and mining and quarrying (+ 12.3%).

Employees
Gross indices
(1995=100)

	Jan	Feb	March	April	May	June	July	Aug	Sept	Oct	Nov	Dec	Year
Totale industry, excluding construction													
1999	98,7	98,4	98,5	98,4	98,6	98,8	98,7	99,0	99,2	99,4	99,4	99,2	98,9
2000	98,2	98,5											
Construction													
1999	99,6	100,5	101,8	102,6	101,1	102,6	102,6	104,3	105,3	104,9	104,8	104,9	102,9
2000	102,9	103,2											

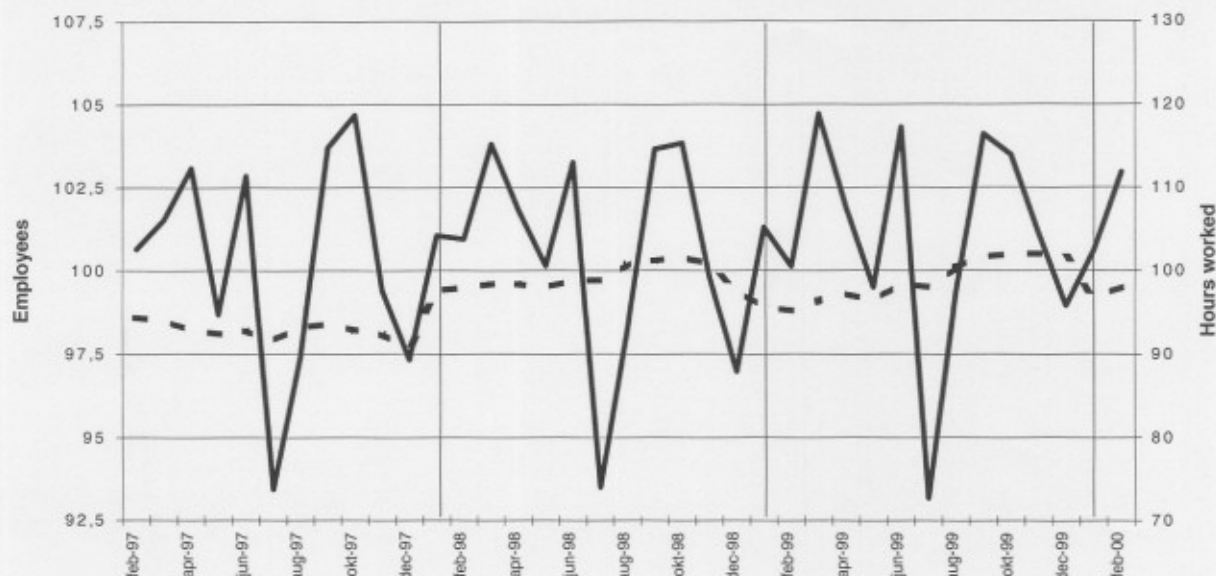
Hours worked
Gross indices
(1995=100)

	Jan	Feb	March	April	May	June	July	Aug	Sept	Oct	Nov	Dec	Year
Totale industry, excluding construction													
1999	104,7	101,3	116,0	104,9	94,5	111,1	75,2	91,2	110,3	108,3	100,5	94,3	101,0
2000	103,4	109,0											
Construction													
1999	105,7	95,7	129,3	117,2	111,8	141,8	61,2	123,3	141,1	136,2	120,2	100,8	115,4
2000	96,1	122,7											

Totale industry
Gross indices
(1995=100)

Hours worked :

Employees :



Last three months compared to the previous three months
Gross indices
(1995=100)

↗ > 2.5%
↘ 0.5% to 2.5%
→ -0.5% to 0.5%
↖ -2.5% to -0.5%
↘ < -2.5%

BE : Belgium
VL : Flanders
WA : Wallonia
BR : Brussels

Industrial branches / Main industrial groupings

	Employees			
	BE	VL	WA	BR
Total industry	↗	↗	↗	↗
Total industry, excluding construction	↘	→	→	↘
Intermediate goods	↗	↘	↗	↘
Capital goods	→	↘	↘	↘
Durable consumer goods	↘	↘	↘	↘
Non-durable consumer goods	↗	↘	↗	→
Mining and quarrying	→	→	→	
Food products, beverages and tobacco	→	→	→	→
Textiles and textiles products	→	→	→	→
Pulp, paper and paper products; publishing and printing	→	→	→	→
Chemicals and chemical, rubber and plastic products	→	→	→	→
Metal products, machinery and equipment	→	→	→	→
Coke, refined petroleum products and nuclear fuel	→	→	→	
Non-metallic mineral products	→	→	→	→
Manufacture of basic metals	→	→	→	→
Furniture	→	→	→	→
Electricity	→	→	→	→
Construction	→	→	→	→



Statistics
Belgium

Short Term Indicators
phone (32)(2)5486571
fax (32)(2)5486831
web:statbel.fgov.be

Belgium - March 2000 : employees industry + 0.1%, hours worked - 0.3%

In March 2000, compared to March of the previous year, the **number of employees** in industry excluding construction in Belgium increased by 0,1%; in construction it rose by 1,6%. At the regional level, industry in Flanders shows a status quo by 0,4%; in Wallonia the number of employees shrunk by -0,6%. The **number of hours worked** in industry in March 2000, when compared with the same month of the previous year, shows a status quo of -0,3% for Belgium as a whole, while the figures for Flanders and Wallonia respectively are 0,0% and -0,2%. In construction the number of hours worked increased by 6,9%.

The decrease by 1.1% of the number of employees in the first quarter of 2000 compared to the last quarter of 1999, seems to be linked mainly to seasonal influences. The two most important sectors, metal works, machinery and equipment (status quo) and chemical industry (+ 0.8%), on the other hand, perform somewhat better than the rest.

Employees
Gross indices
(1995=100)

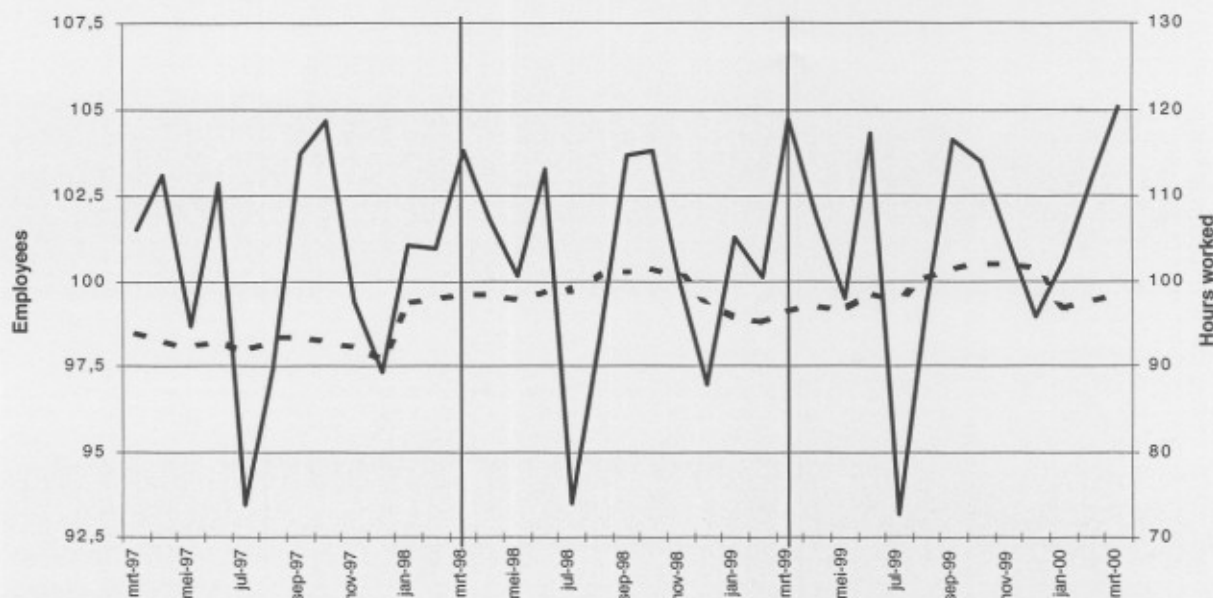
	Jan	Feb	March	April	May	June	July	Aug	Sept	Oct	Nov	Dec	Year
Total industry, excluding construction													
1999	98,7	98,4	98,5	98,4	98,6	98,8	98,7	99,0	99,2	99,4	99,4	99,2	98,9
2000	98,3	98,5	98,6										
Construction													
1999	99,6	100,5	101,8	102,6	101,1	102,6	102,6	104,3	105,3	104,9	104,8	104,9	102,9
2000	102,5	102,9	103,4										
Total industry, excluding construction													
1999	104,7	101,3	116,0	104,9	94,5	111,1	75,2	91,2	110,3	108,3	100,5	94,3	101,0
2000	103,4	108,9	115,7										
Construction													
1999	105,7	95,7	129,3	117,2	111,8	141,8	61,2	123,3	141,1	136,2	120,2	100,8	115,4
2000	96,3	123,2	138,2										

Hours worked
Gross indices
(1995=100)

Total industry
Gross indices
(1995=100)

Hours worked :

Employees :



Last three months
compared to the
previous three
months
Gross indices
(1995=100)

↗ > 2.5%
↘ 0.5% to 2.5%
→ -0.5% to 0.5%
↘ -2.5% to -0.5%
↘ < -2.5%

BE : Belgium
VL : Flanders
WA : Wallonia
BR : Brussels

Industrial branches / Main industrial groupings	Employees			
	BE	VL	WA	BR
Total industry	↘	↘	↘	↘↘
Total industry, excluding construction	↘	↘	↘	↘↘
Intermediate goods	→	↘	↘	→
Capital goods	↘	→	↘	↘↘
Durable consumer goods	↘↘	↘↘	↘↘	↘↘
Non-durable consumer goods	↘	↘	↘↘	↘↘
Mining and quarrying	→	↘↘	↘	
Food products, beverages and tobacco	↘↘	↘↘	↘↘	↘↘
Textiles and textiles products	↘	↘	↘	↘↘
Pulp, paper and paper products; publishing and printing	↘	↘	↘↘	↘↘
Chemicals and chemical, rubber and plastic products	↘	↘	↘	↘↘
Metal products, machinery and equipment	→	→	↘	↘↘
Coke, refined petroleum products and nuclear fuel	↘	↘	→	
Non-metallic mineral products	↘	↘	↘	
Manufacture of basic metals	↘	→	↘	↘
Furniture	↘	↘	↘↘	↘
Electricity	↘	↘	↘	↘
Construction	↘	↘	↘	↘



Statistics
Belgium

Short Term Indicators
phone (32)(2)5486571
fax (32)(2)5486831
web:statbel.fgov.be

Belgium - April 2000 : employees industry + 0.0%, hours worked - 6.1%

In April 2000, compared to April of the previous year, the **number of employees** in industry excluding construction in Belgium fell by 0,0%; in construction it rose by 1,2%. At the regional level, industry in Flanders shows a status quo by 0,3%; in Wallonia the number of employees shrunk by -0,4%. The **number of hours worked** in industry in April 2000, when compared with the same month of the previous year, shows a strong decline of -6,1% for Belgium as a whole, while the figures for Flanders and Wallonia respectively are -5,7% and -7,5%. In construction the number of hours worked fell by -3,6%.

The 0,5 % diminishment of the number of employees in the industry during the last three months as compared to the three previous months, still is attributable to a possible seasonal influence.

Employees
Gross indices
(1995=100)

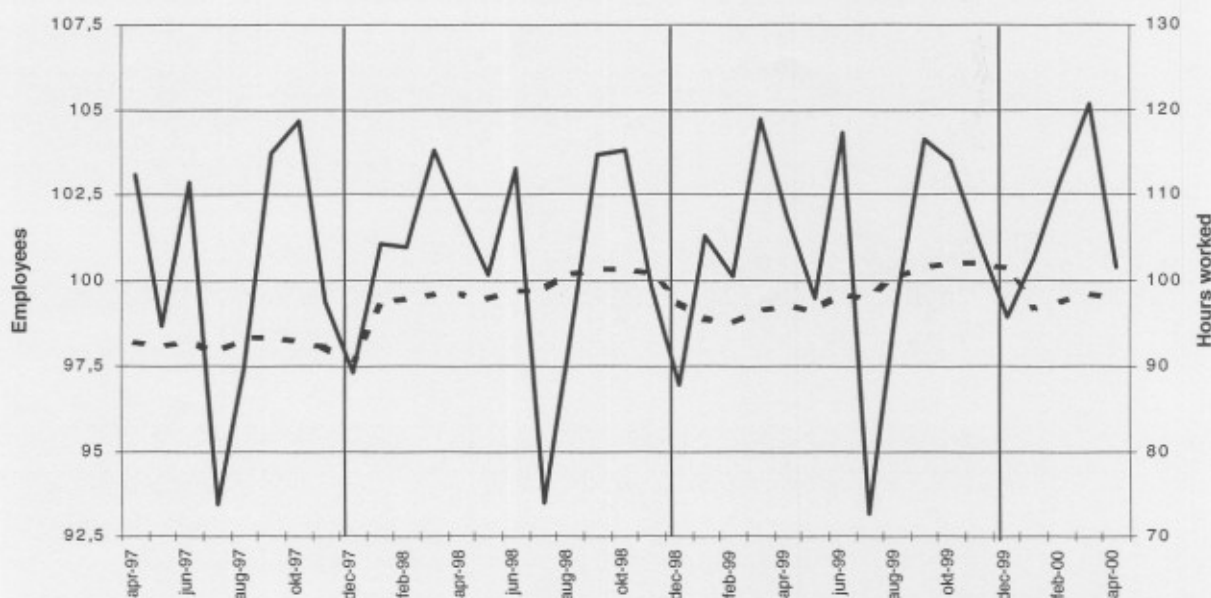
	Jan	Feb	March	April	May	June	July	Aug	Sept	Oct	Nov	Dec	Year
Total industry, excluding construction													
1999	98,7	98,4	98,5	98,4	98,6	98,8	98,7	99,0	99,2	99,4	99,4	99,2	98,9
2000	98,3	98,5	98,6	98,4									
Construction													
1999	99,6	100,5	101,8	102,6	101,1	102,6	102,6	104,3	105,3	104,9	104,8	104,9	102,9
2000	102,5	102,7	103,3	103,8									
Total industry, excluding construction													
1999	104,7	101,3	116,0	104,9	94,5	111,1	75,2	91,2	110,3	108,3	100,5	94,3	101,0
2000	103,4	109,0	115,9	98,5									
Construction													
1999	105,7	95,7	129,3	117,2	111,8	141,8	61,2	123,3	141,1	136,2	120,2	100,8	115,4
2000	96,3	123,7	139,5	113,0									

Hours worked
Gross indices
(1995=100)

Total industry
Gross indices
(1995=100)

Hours worked :

Employees :



Last three months
compared to the
previous three
months
Gross indices
(1995=100)

↗ > 2.5%
↘ 0.5% to 2.5%
→ -0.5% to 0.5%
↘ -2.5% to -0.5%
↘ < -2.5%

BE : Belgium
VL : Flanders
WA : Wallonia
BR : Brussels

Industrial branches / Main industrial groupings	Employees			
	BE	VL	WA	BR
Total industry	↘	→	↘	↘
Total industry, excluding construction	→	→	↘	↘
Intermediate goods	→	↘	→	↘
Capital goods	↘	↘	→	↘
Durable consumer goods	↘	↘	↘	↘
Non-durable consumer goods	→	↘	↘	↘
Mining and quarrying	↘	↗	↘	
Food products, beverages and tobacco	↘	↘	↘	↘
Textiles and textiles products	↘	↘	↘	↘
Pulp, paper and paper products; publishing and printing	↘	→	→	↘
Chemicals and chemical, rubber and plastic products	→	↘	↘	↘
Metal products, machinery and equipment	→	→	↘	↘
Coke, refined petroleum products and nuclear fuel	→	→	→	
Non-metallic mineral products	↘	↘	↘	
Manufacture of basic metals	→	→	→	→
Furniture	↘	↘	↘	↘
Electricity	↘	↘	↘	↘
Construction	↘	→	↘	→



Statistics
Belgium

Short Term Indicators
phone (32)(2)5486571
fax (32)(2)5486831
web:statbel.fgov.be

Belgium - May 2000 : employees industry + 0.1%, hours worked + 18.2%

Hours worked rise faster than employees

In May 2000, compared to May of the previous year, the **number of employees** in industry excluding construction in Belgium stabilized (+ 0,1%); in construction it rose by 2,4%. At the regional level, industry also shows a status quo in Flanders (+ 0,3%) as well as in Wallonia (+ 0%). The **number of hours worked** in industry in May 2000, when compared with the same month of the previous year, shows a strong increase of 18,2% for Belgium as a whole, while the figures for Flanders and Wallonia respectively are 19,1% and 16,9%. In construction the number of hours worked increased by 25,5%.

The strong increase of hours worked in industry and construction is in part due to the greater number of working days in May 2000 (2 days or 10.5% more than in May 1999); but a year by year comparison of the first five months also shows a real increase (Industry + 3.3%, construction + 9.7%). This same comparison arrives at lower figures for number of employees: + 0%, a status quo, for industry and + 6,5% for construction.

Employees
Gross indices
(1995=100)

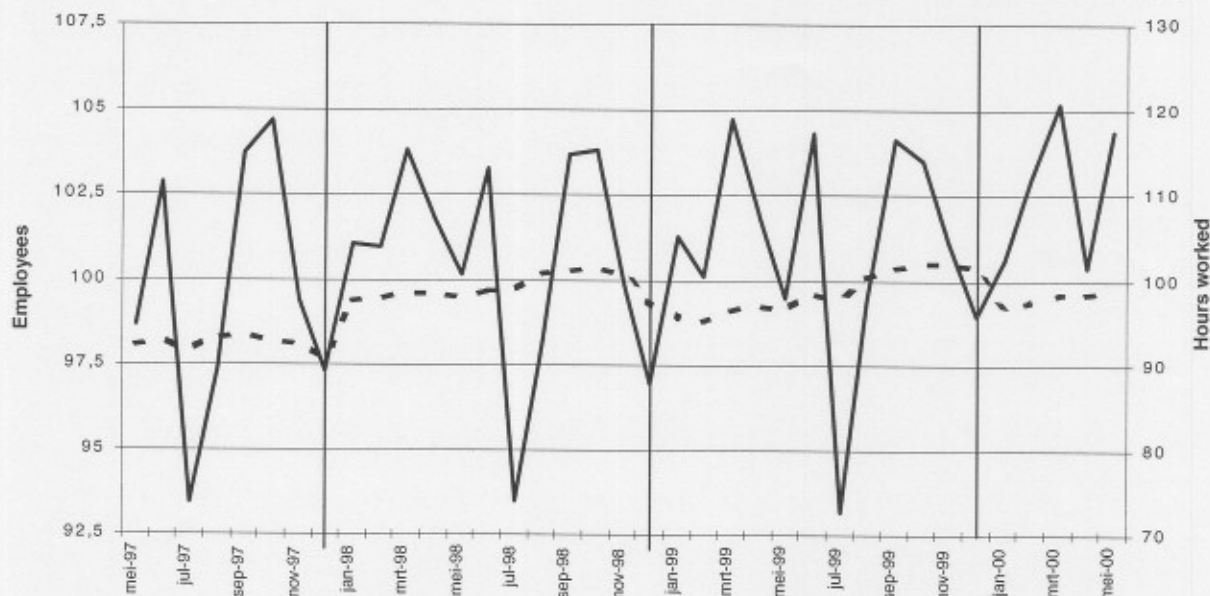
	Jan	Feb	March	April	May	June	July	Aug	Sept	Oct	Nov	Dec	Year
Total industry, excluding construction													
1999	98,7	98,4	98,5	98,4	98,6	98,8	98,7	99,0	99,2	99,4	99,4	99,2	98,9
2000	98,3	98,5	98,5	98,6	98,7								
Construction													
1999	99,6	100,5	101,8	102,6	101,1	102,6	102,6	104,3	105,3	104,9	104,8	104,9	102,9
2000	102,5	102,7	103,6	103,4	103,5								
Total industry, excluding construction													
1999	104,7	101,3	116,0	104,9	94,5	111,1	75,2	91,2	110,3	108,3	100,5	94,3	101,0
2000	103,4	109,0	115,9	98,5	111,7								
Construction													
1999	105,7	95,7	129,3	117,2	111,8	141,8	61,2	123,3	141,1	136,2	120,2	100,8	115,4
2000	96,3	123,7	139,9	113,7	140,3								

Hours worked
Gross indices
(1995=100)

Total industry
Gross indices
(1995=100)

Hours worked :

Employees :



Last three months compared to the previous three months
Gross indices
(1995=100)

↗ > 2.5%
↘ 0.5% to 2.5%
→ -0.5% to 0.5%
↘ -2.5% to -0.5%
↘ < -2.5%

BE : Belgium
VL : Flanders
WA : Wallonia
BR : Brussels

Industrial branches / Main industrial groupings	Employees			
	BE	VL	WA	BR
Total industry	→	→	↘	↘
Total industry, excluding construction	→	→	→	↘
Intermediate goods	→	→	→	↘
Capital goods	↘	↘	↘	↘
Durable consumer goods	↘	→	↘	↘
Non-durable consumer goods	→	↘	↘	↘
Mining and quarrying	↗	↗	↗	↘
Food products, beverages and tobacco	↘	↘	↘	↘
Textiles and textiles products	→	↘	↘	↘
Pulp, paper and paper products; publishing and printing	→	→	↘	↘
Chemicals and chemical, rubber and plastic products	→	→	↘	↘
Metal products, machinery and equipment	→	→	→	↘
Coke, refined petroleum products and nuclear fuel	↘	↘	→	↘
Non-metallic mineral products	→	→	↘	↘
Manufacture of basic metals	→	→	→	↘
Furniture	↘	↘	↘	↘
Electricity	↘	↘	↘	↘
Construction	→	→	↘	↘



Ministry of
Economic Affairs



Statistics
Belgium
Short Term Indicators
phone (32)(2)5488571
fax (32)(2)5488831
web:statbel.fgov.be

Belgium - June 2000 : employees industry + 0.1%, hours worked - 0.3%

In June 2000, compared to June of the previous year, the **number of employees** in industry excluding construction in Belgium increased by 0,1%; in construction it rose by 0,6%. At the regional level, industry in Flanders shows a status quo by 0,3%; in Wallonia the number of employees expanded by 0,1%. The **number of hours worked** in industry in June 2000, when compared with the same month of the previous year, shows a strong decline of -8,4% for Belgium as a whole, while the figures for Flanders and Wallonia respectively are -8,0% and -10,1%. In construction the number of hours worked fell by -11,2%.

As the number of employees in Flanders and Wallonia and the most of the sectors remains more or less stable, the hours worked show a general decrease. This is probably more attributed to the increased number of holidays and the decreased number of working days than usual in June 2000, than to a decline of the business cycle. The other indicators (production, and new orders) are situated at a lower level than usual, one observes the same phenomenon in the other European countries.

Employees
Gross indices
(1995=100)

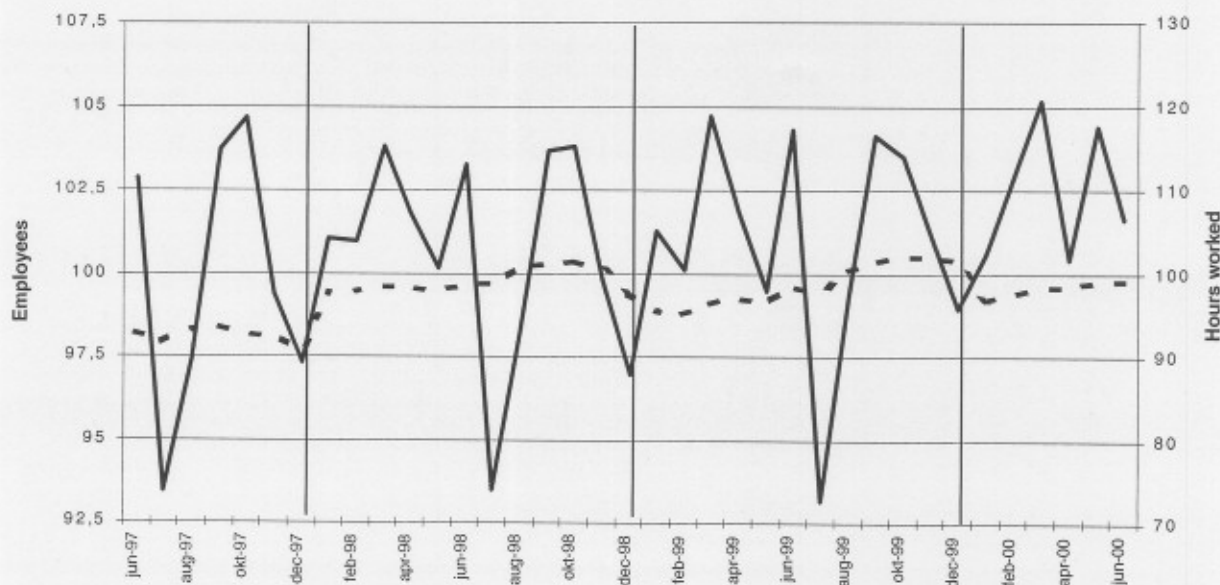
	Jan	Feb	March	April	May	June	July	Aug	Sept	Oct	Nov	Dec	Year
Total industry, excluding construction													
1999	98,7	98,4	98,5	98,4	98,6	98,8	98,7	99,0	99,2	99,4	99,4	99,2	98,9
2000	98,3	98,5	98,5	98,6	98,7	98,9							
Construction													
1999	99,6	100,5	101,8	102,6	101,1	102,6	102,6	104,3	105,3	104,9	104,8	104,9	102,9
2000	102,5	102,7	103,6	103,5	104,0	103,2							
Total industry, excluding construction													
1999	104,7	101,3	116,0	104,9	94,5	111,1	75,2	91,2	110,3	108,3	100,5	94,3	101,0
2000	103,4	109,0	115,9	98,4	111,6	101,8							
Construction													
1999	105,7	95,7	129,3	117,2	111,8	141,8	61,2	123,3	141,1	136,2	120,2	100,8	115,4
2000	96,3	123,7	139,9	114,6	141,1	125,9							

Hours worked
Gross indices
(1995=100)

Total industry
Gross indices
(1995=100)

Hours worked :

Employees :



Last three months compared to the previous three months
Gross indices (1995=100)

↗ > 2.5%
↘ 0.5% to 2.5%
→ -0.5% to 0.5%
↘ -2.5% to -0.5%
↘ < -2.5%

BE : Belgium
VL : Flanders
WA : Wallonia
BR : Brussels

Industrial branches / Main industrial groupings	Em ployees			
	BE	VL	WA	BR
Total industry	→	→	→	→
Total industry, excluding construction	→	→	→	↘
Intermediate goods	↗	↗	→	→
Capital goods	→	→	↗	↗
Durable consumer goods	↗	→	↗	↗
Non-durable consumer goods	↗	↗	→	↘
Mining and quarrying	↗	↗	↗	↗
Food products, beverages and tobacco	→	→	↗	↘
Textiles and textiles products	↗	↗	↘	↘
Pulp, paper and paper products; publishing and printing	→	→	↗	↗
Chemicals and chemical, rubber and plastic products	→	→	↗	→
Metal products, machinery and equipment	↗	→	↗	↗
Coke, refined petroleum products and nuclear fuel	→	→	↗	↗
Non-metallic mineral products	→	↗	↘	↗
Manufacture of basic metals	↘	↘	→	↗
Furniture	→	→	↗	↗
Electricity	↘	↘	↘	↘
Construction	↗	→	→	↗



Ministry of
Economic Affairs



Statistics
Belgium
Short Term Indicators
phone (32)(2)5486571
fax (32)(2)5486831
web:statbel.fgov.be

Belgium - July 2000 : employees industry + 0.3%, hours worked - 0.8%

Status quo

In July 2000, compared to July of the previous year, the **number of employees** in industry excluding construction in Belgium varied by 0,3%; in construction it rose by 1,4%. At the regional level, industry in Flanders shows an increase by 0,6%; in Wallonia the number of employees shrunk by 0,8%. The **number of hours worked** in industry in July 2000, when compared with the same month of the previous year, shows a decline of 0,8% for Belgium as a whole, while the figures for Flanders and Wallonia respectively are -0,4% and -4,3%. In construction the number of hours worked fell by 9,8%.

Because of the holidays the decrease of hours worked in July probably does not provide a good indication of the business trend. The number of employees of the last three months compared to the previous three months in both industry and construction remains more or less stable. For industry and construction together Flanders and Wallonia show exactly the same slight increase of 0.4%.

Employees
Gross indices
(1995=100)

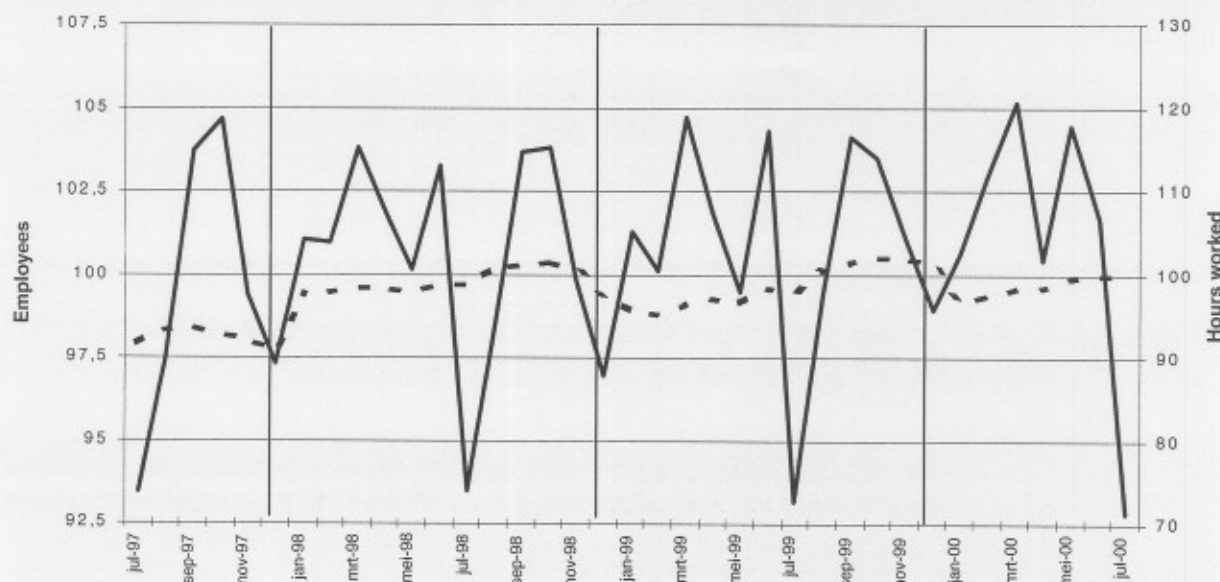
	Jan	Feb	March	April	May	June	July	Aug	Sept	Oct	Nov	Dec	Year
Total industry, excluding construction													
1999	98,7	98,4	98,5	98,4	98,6	98,8	98,7	99,0	99,2	99,4	99,4	99,2	98,9
2000	98,3	98,5	98,5	98,6	98,8	98,9	99,0						
Construction													
1999	99,6	100,5	101,8	102,6	101,1	102,6	102,6	104,3	105,3	104,9	104,8	104,9	102,9
2000	102,5	102,7	103,6	103,5	104,1	104,2	104,0						
Total industry, excluding construction													
1999	104,7	101,3	116,0	104,9	94,5	111,1	75,2	91,2	110,3	108,3	100,5	94,3	101,0
2000	103,4	109,0	115,9	98,4	111,6	101,6	74,6						
Construction													
1999	105,7	95,7	129,3	117,2	111,8	141,8	61,2	123,3	141,1	136,2	120,2	100,8	115,4
2000	96,3	123,7	139,9	114,6	142,2	126,8	55,2						

Hours worked
Gross indices
(1995=100)

Total industry
Gross indices
(1995=100)

Hours worked :

Employees :



Last three months compared to the previous three months
Gross indices
(1995=100)

↗ > 2.5%
↘ 0.5% to 2.5%
→ -0.5% to 0.5%
↘ -2.5% to -0.5%
↘ < -2.5%

BE : Belgium
VL : Flanders
WA : Wallonia
BR : Brussels

Industrial branches / Main industrial groupings	Employees			
	BE	VL	WA	BR
Total industry	→	→	→	→
Total industry, excluding construction	→	→	→	→
Intermediate goods	↗	↗	→	→
Capital goods	→	→	→	↗
Durable consumer goods	↗	→	↗	↗
Non-durable consumer goods	→	↗	→	↘
Mining and quarrying	↗	↗	↗	
Food products, beverages and tobacco	→	→	↗	
Textiles and textiles products	→	↗	↘	↘
Pulp, paper and paper products; publishing and printing	→	→	↘	↗
Chemicals and chemical, rubber and plastic products	↗	→	↗	↗
Metal products, machinery and equipment	↗	↗	↗	↗
Coke, refined petroleum products and nuclear fuel	↘	↘	↗	
Non-metallic mineral products	→	↗	↘	
Manufacture of basic metals	→	↗	↘	
Furniture	→	→	↗	↗
Electricity	→	→	↗	↗
Construction	↗	→	↗	↗



Ministry of
Economic Affairs



Statistics
Belgium
Short Term Indicators
phone (32)(2)5486571
fax (32)(2)5486831
web:statbel.fgov.be

Belgium - August 2000 : employees industry + 0,1%, hours worked + 1,0% Status quo

In August 2000, compared to August of the previous year, the **number of employees** in industry excluding construction in Belgium increased by 0,1%; in construction it rose by 1,3%. At the regional level, industry in Flanders shows a status quo by 0,4%; in Wallonia the number of employees shrunk by 0,9%. The **number of hours worked** in industry in August 2000, when compared with the same month of the previous year, shows an increase of 1,0% for Belgium as a whole, while the figures for Flanders and Wallonia respectively are +1,1% and -0,9%. In construction the number of hours worked increased by 3,0%.

The number of employees in industry and construction of the last three months compared to the previous three months remains more or less stable for Belgium as a whole as well as for Flanders and Wallonia. Most sectors present the same stable picture, except for some important ones which stand out positively (basic metals + 1,0%, metal products, machinery and equipment + 0,8%, construction + 0,6%) or, in just one case, negatively (textiles and clothing - 2,1%).

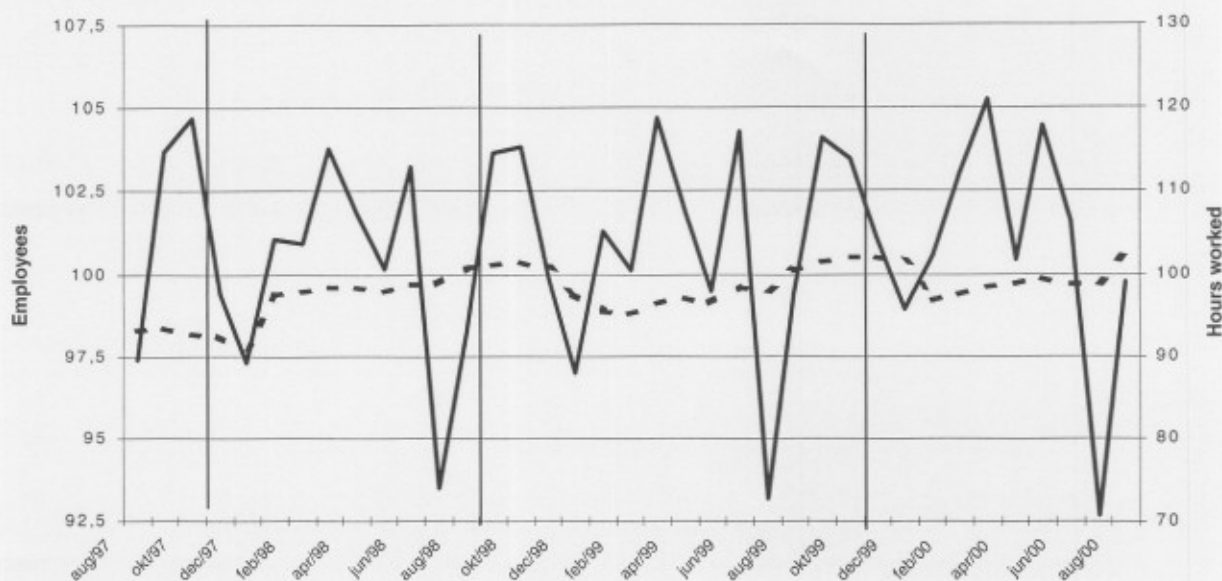
Employees Gross indices (1995=100)

	Jan	Feb	March	April	May	June	July	Aug	Sept	Oct	Nov	Dec	Year
Totale industry, excluding construction													
1999	98,7	98,4	98,5	98,4	98,6	98,8	98,7	99,0	99,2	99,4	99,4	99,2	98,9
2000	98,3	98,5	98,5	98,6	98,8	98,6	98,6	99,1					
Construction													
1999	99,6	100,5	101,8	102,6	101,1	102,6	102,6	104,3	105,3	104,9	104,8	104,9	102,9
2000	102,5	102,8	103,8	103,7	104,3	104,1	103,8	105,7					
Totale industry, excluding construction													
1999	104,7	101,3	116,0	104,9	94,5	111,1	75,2	91,2	110,3	108,3	100,5	94,3	101,0
2000	103,4	109,0	116,1	98,4	111,8	101,2	74,1	92,1					
Construction													
1999	105,7	95,7	129,3	117,2	111,8	141,8	61,2	123,3	141,1	136,2	120,2	100,8	115,4
2000	96,4	123,8	140,1	114,7	142,3	127,4	55,7	127,0					

Total industry Gross indices (1995=100)

Hours worked :
—————

Employees :
.....



Last three months compared to the previous three months Gross indices (1995=100)

- ↗ > 2.5%
- ↘ 0.5% to 2.5%
- -0.5% to 0.5%
- ↘ -2.5% to -0.5%
- ↘ < -2.5%

BE : Belgium
VL : Flanders
WA : Wallonia
BR : Brussels

Industrial branches / Main industrial groupings	Employees			
	BE	VL	WA	BR
Total industry	→	→	→	→
Total industry, excluding construction	→	→	→	→
Intermediate goods	↗	↗	→	→
Capital goods	→	→	↘	↗
Durable consumer goods	↘	→	↗	↗
Non-durable consumer goods	→	→	→	→
Mining and quarrying	↗	↗	↗	
Food products, beverages and tobacco	→	→	↗	↘
Textiles and textiles products	↘	↘	↘	↘
Pulp, paper and paper products; publishing and printing	→	→	↘	→
Chemicals and chemical, rubber and plastic products	→	→	↗	↗
Metal products, machinery and equipment	↗	↗	→	↗
Coke, refined petroleum products and nuclear fuel	↗	↗	↗	
Non-metallic mineral products	→	→	→	
Manufacture of basic metals	↗	↗	↘	↗
Furniture	→	↘	↗	↗
Electricity	↘	↘	↘	↘
Construction	↗	↗	↗	↗



Ministry of
Economic Affairs